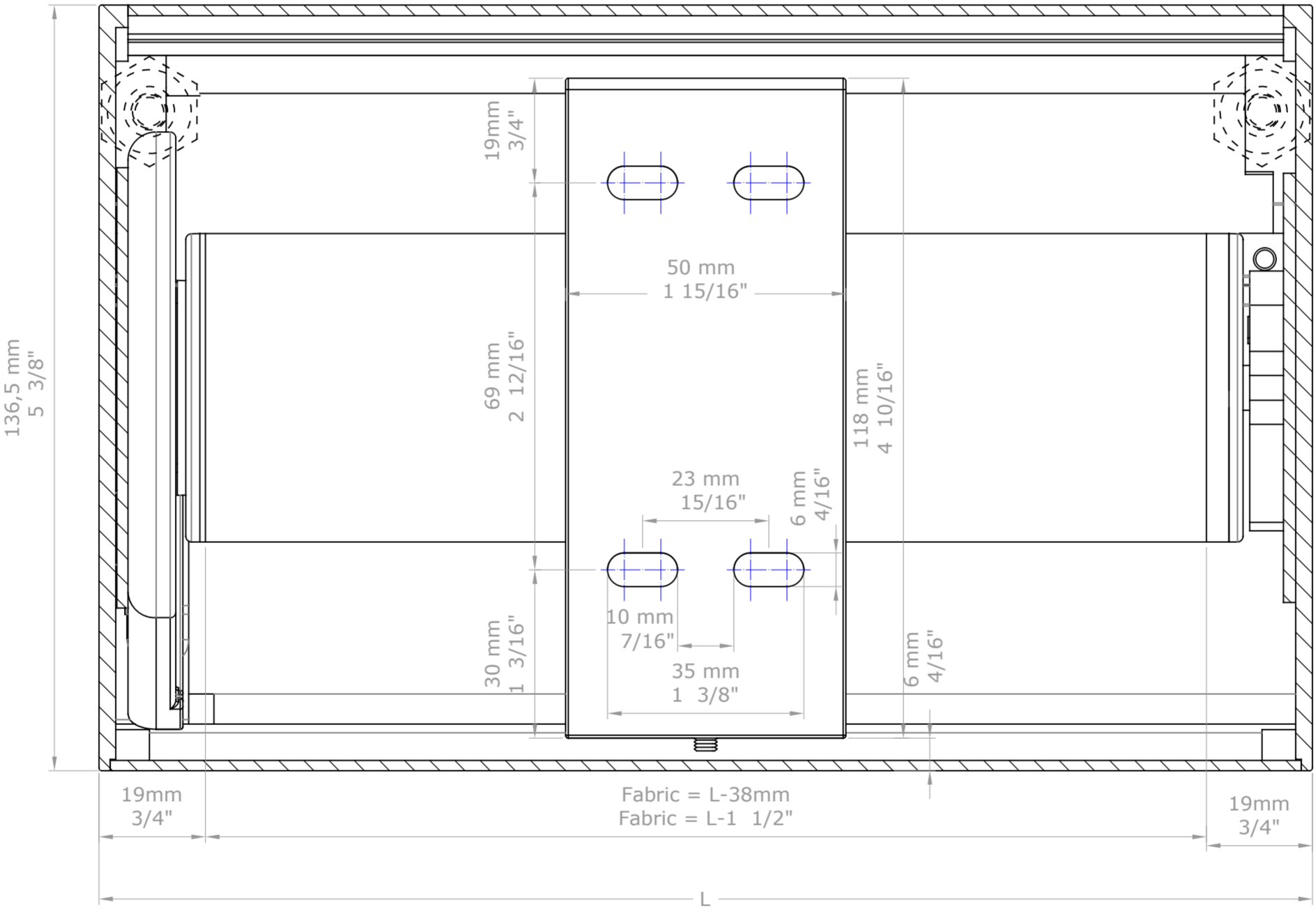
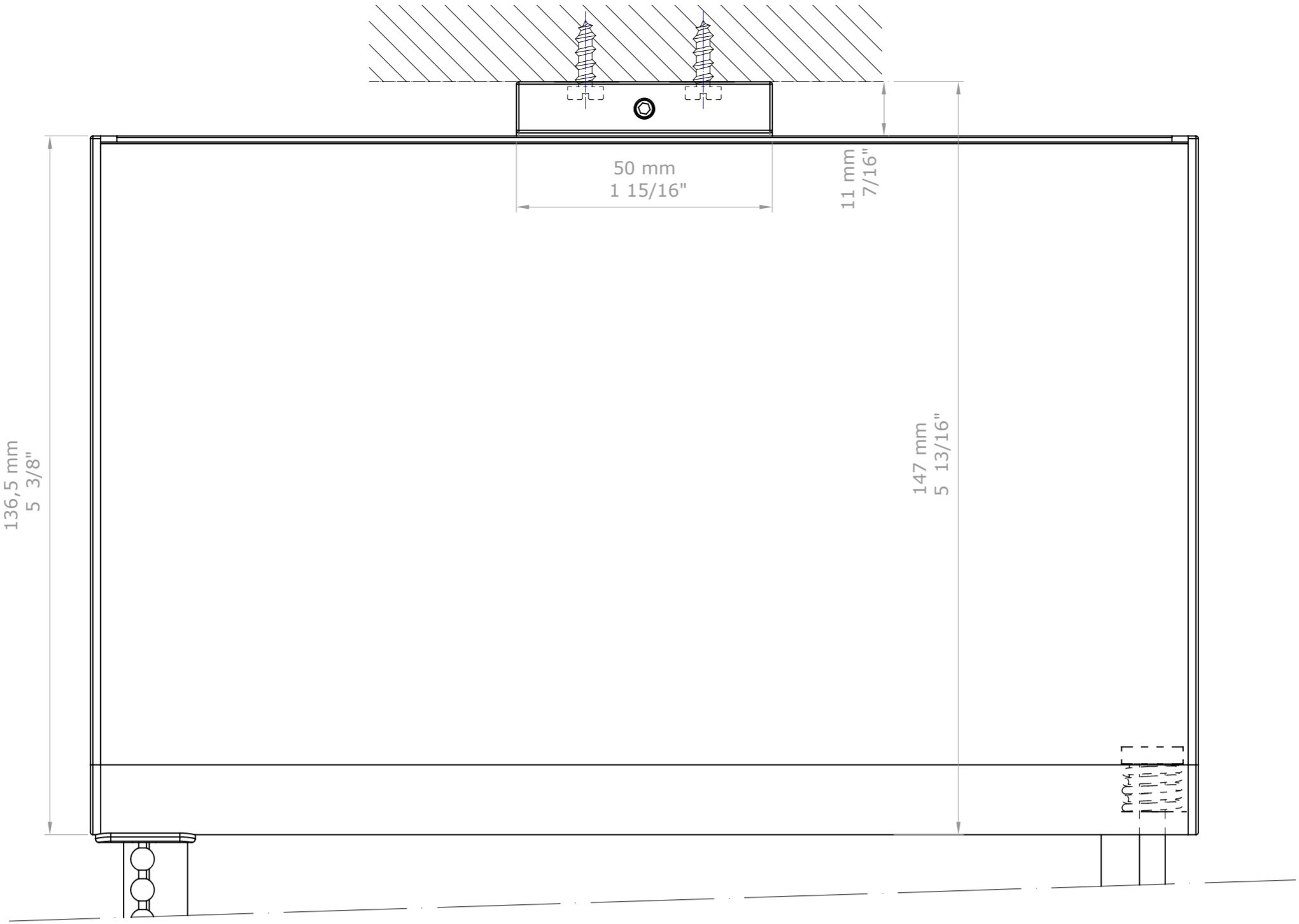
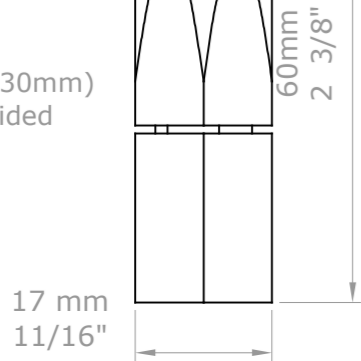


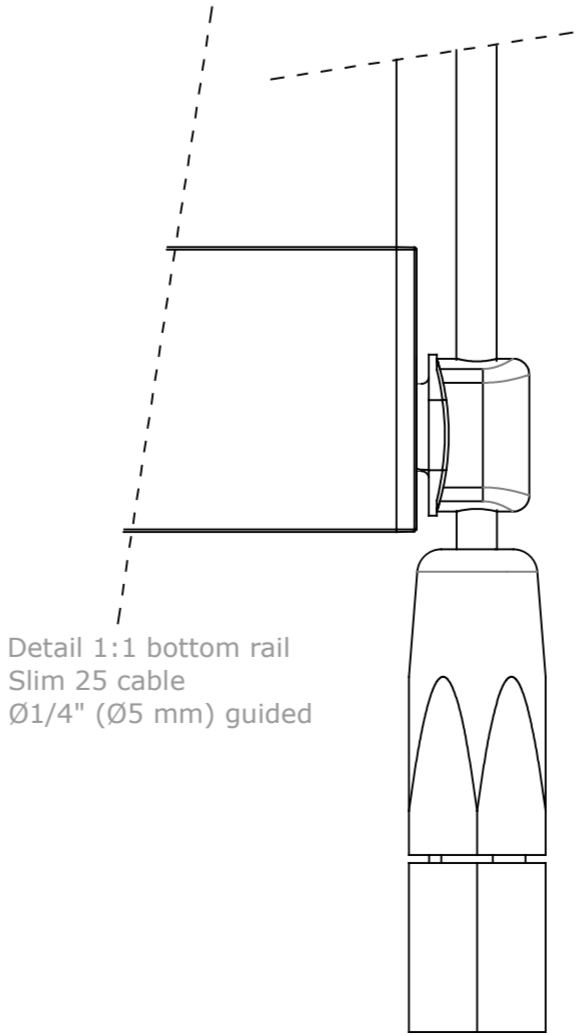
D. REVIS.			BANDALUX	
REVISION	123456789			
DATE	16-05-2017		PLANE N°	
DESIGN	Antonio F.		FORMAT	A-3
SCALE	Rolling blind in Box B-Box 5". Chain. Cable Ø1/4" (Ø5 mm) guided Installation: ceiling / floor Mechanism: VTX30 Bottom rail: round hembar 1 1/8" (Ø30mm) Tube 2 9/16" (Ø65mm)			
1/1				



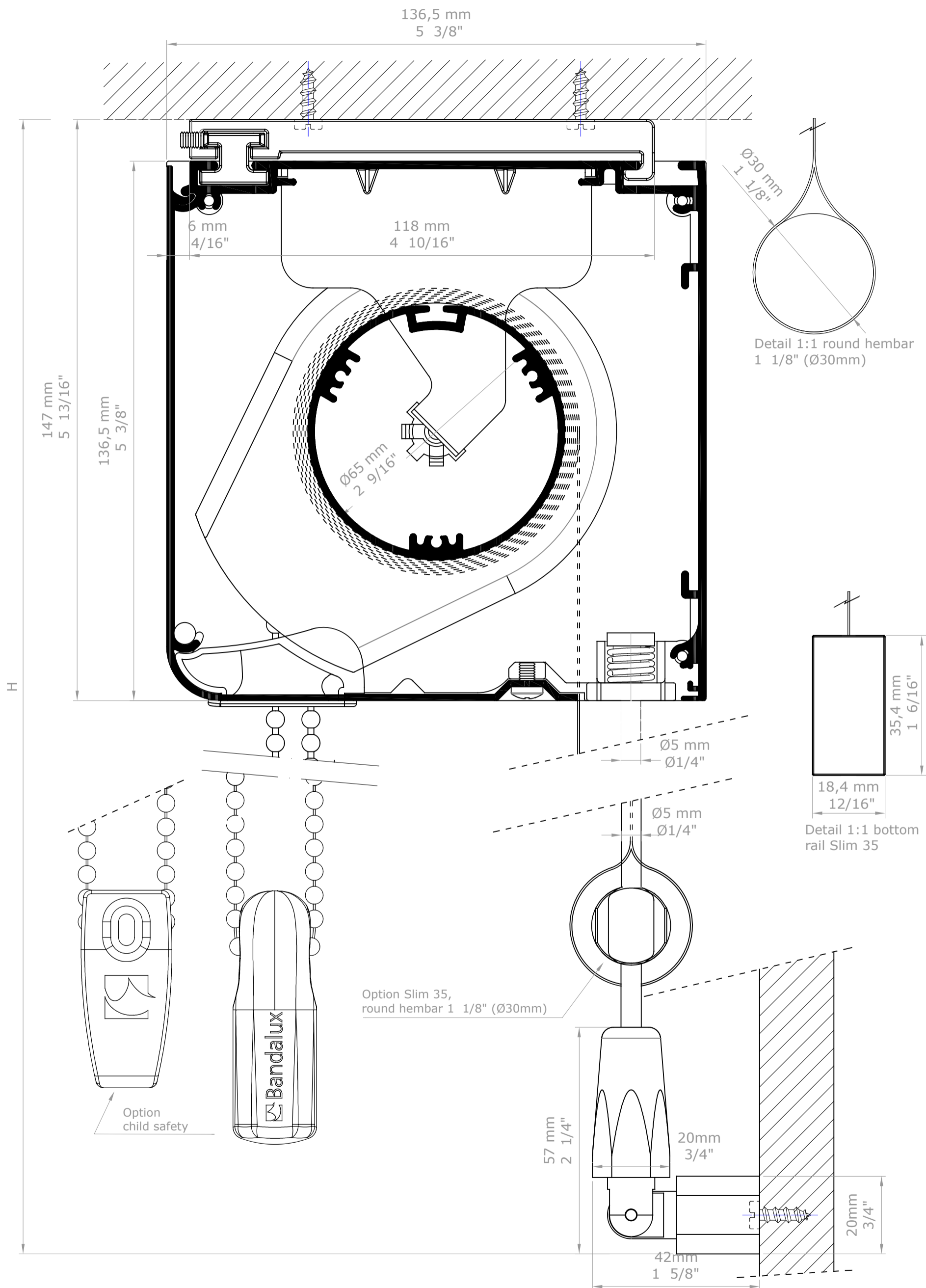
Detail 1:1 bottom rail  
round hembar 1 1/8" (Ø30mm)  
cable Ø1/4" (Ø5 mm) guided



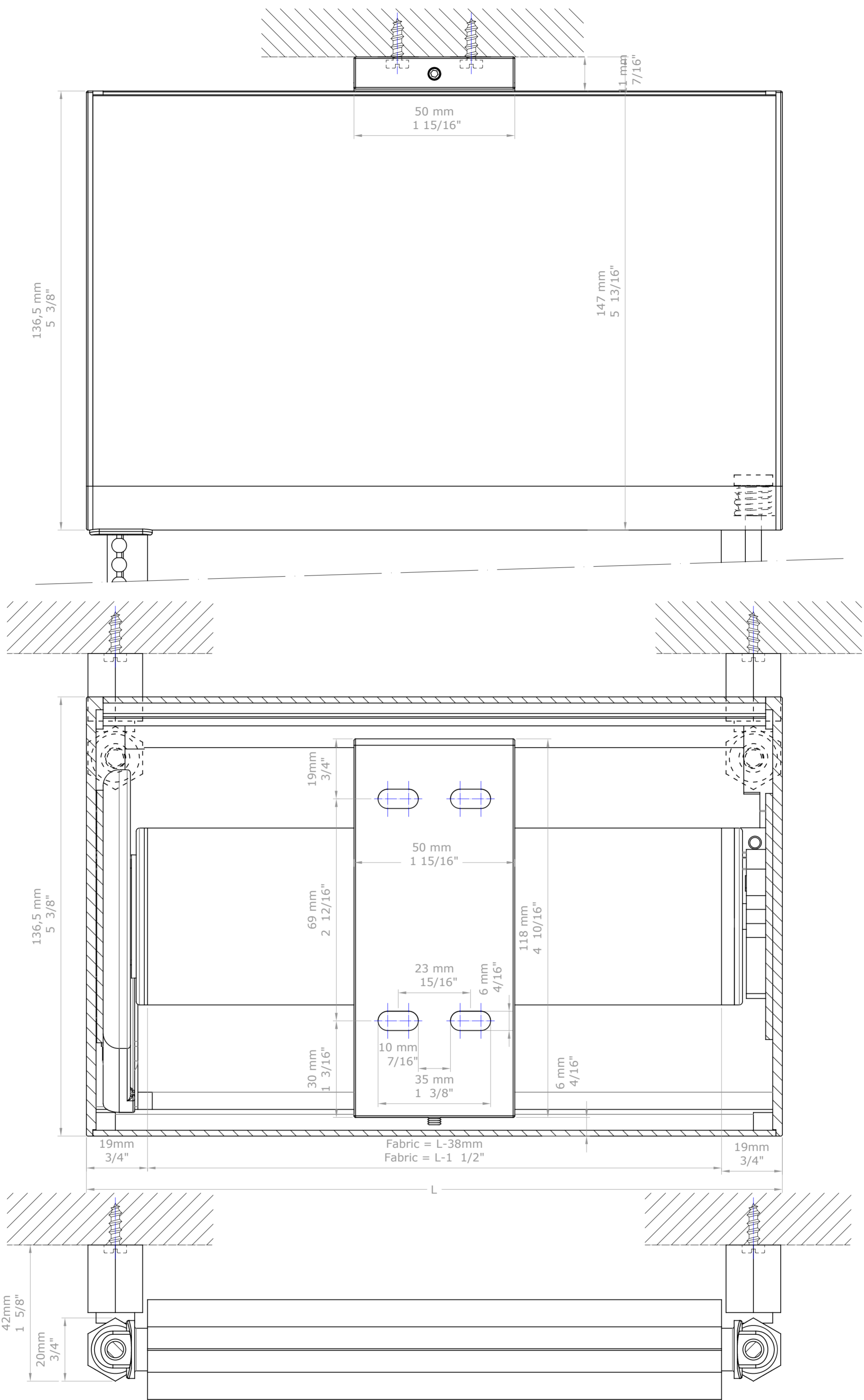
Detail 1:1 bottom rail  
Slim 25 cable  
Ø1/4" (Ø5 mm) guided



D. REVIS.	BANDALUX		
REVISION			
DATE	16-05-2017	PLANE N°	
DESIGN	Antonio F.	FORMAT	A-2
SCALE	Rolling blind in Box B-Box 5". Chain. Cable Ø1/4" (Ø5 mm) guided Installation: ceiling / floor Mechanism: VTX30 Bottom rail: round hembar 1 1/8" (Ø30mm) Tube 2 9/16" (Ø65mm)		
1/1			



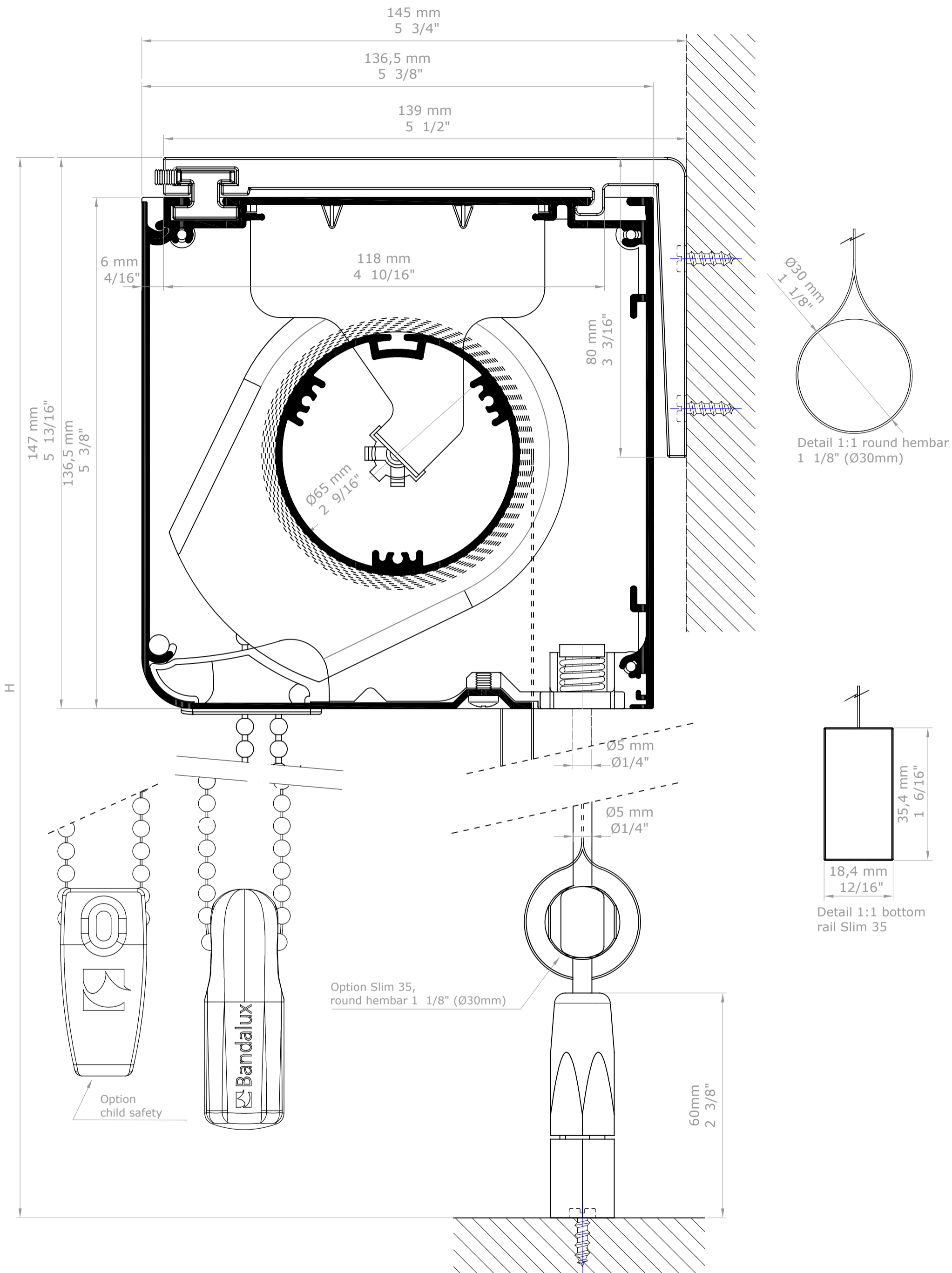
D. REVIS.		<b>BANDALUX</b>	
REVISION	1 2 3 4 5 6 7 8 9		
DATE	16-05-2017	PLANE Nº	
DESIGN	Antonio F.	FORMAT	A-3
SCALE	Rolling blind in Box B-Box 5". Chain. Cable Ø1/4" (Ø5 mm) guided Installation: ceiling / wall Mechanism: VTX30 Bottom rail: round hembar 1 1/8" (Ø30mm) Tube 2 9/16" (Ø65mm)		
<b>1/1</b>			



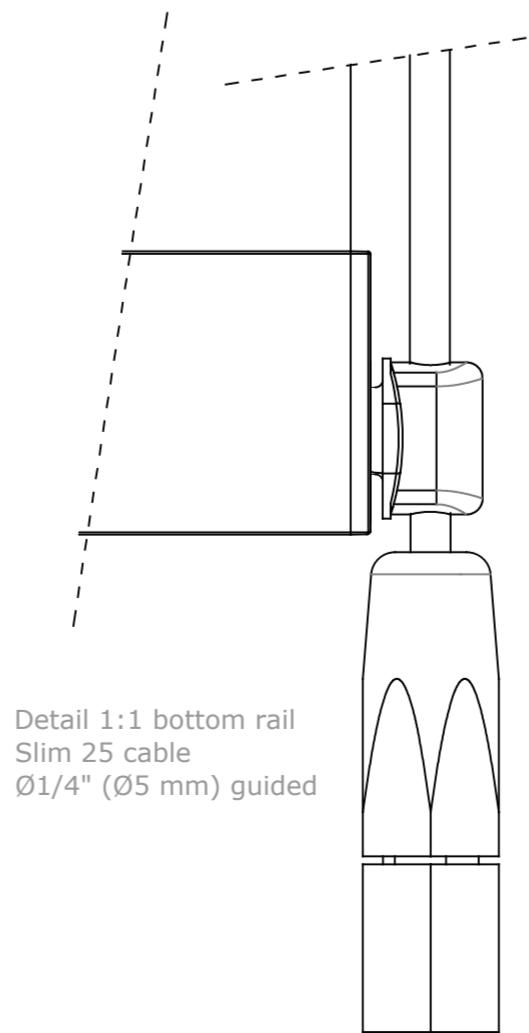
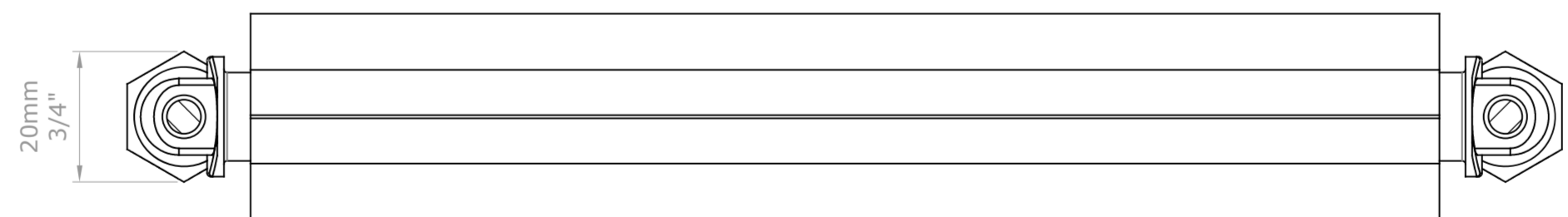
Detail 1:1 bottom rail  
round hembar 1 1/8" (Ø30mm)  
cable Ø1/4" (Ø5 mm) guided

Detail 1:1 bottom rail  
Slim 25 cable  
Ø1/4" (Ø5 mm) guided

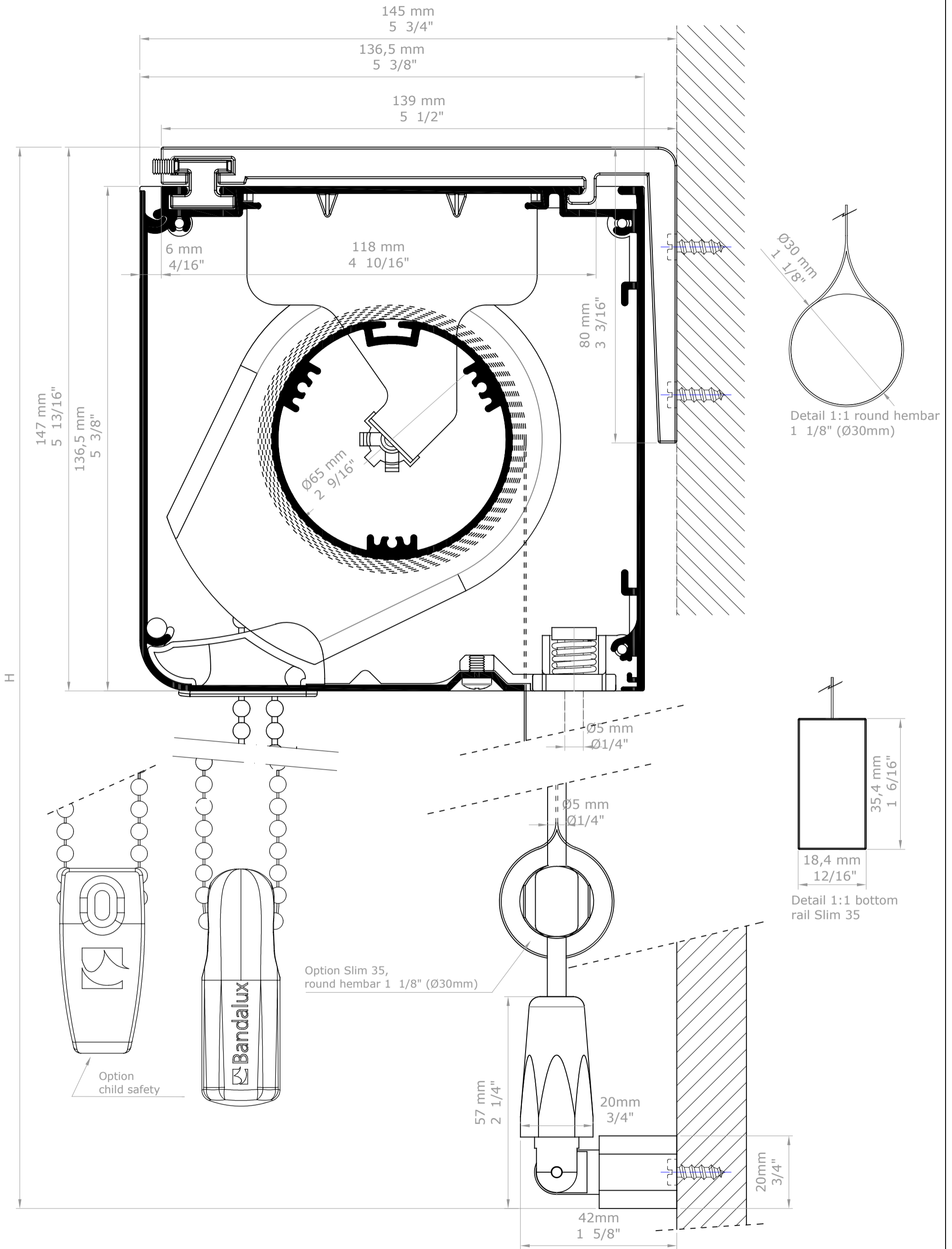
D. REVIS.		BANDALUX	
REVISION	1 2 3 4 5 6 7 8 9		
DATE	16-05-2017	PLANE Nº	
DESIGN	Antonio F.	FORMAT	A-2
SCALE <b>1/1</b>	Rolling blind in Box B-Box 5". Chain. Cable Ø1/4" (Ø5 mm) guided Installation: ceiling / wall Mechanism: VTX30 Bottom rail: round hembar 1 1/8" (Ø30mm) Tube 2 9/16" (Ø65mm)		



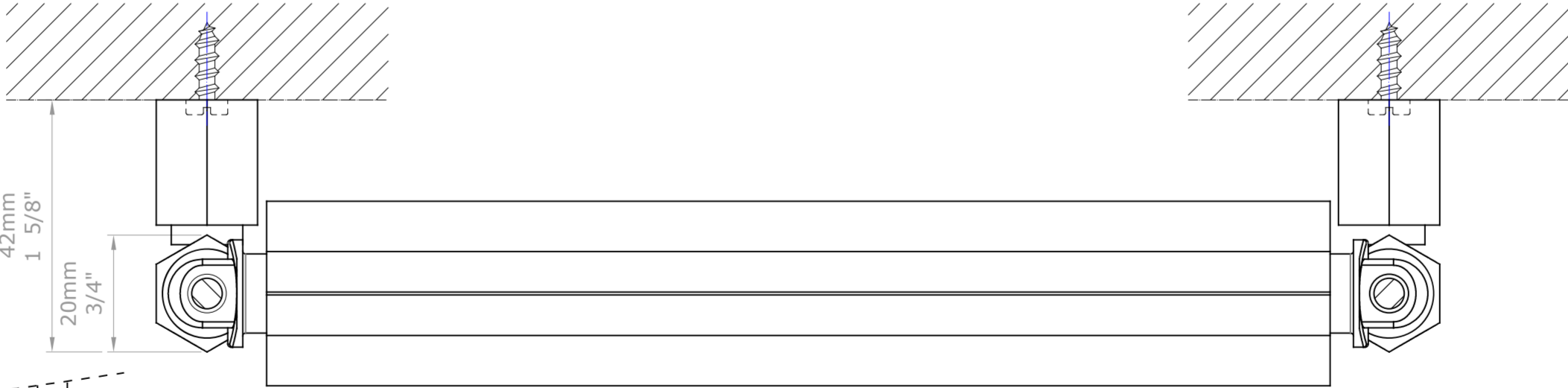
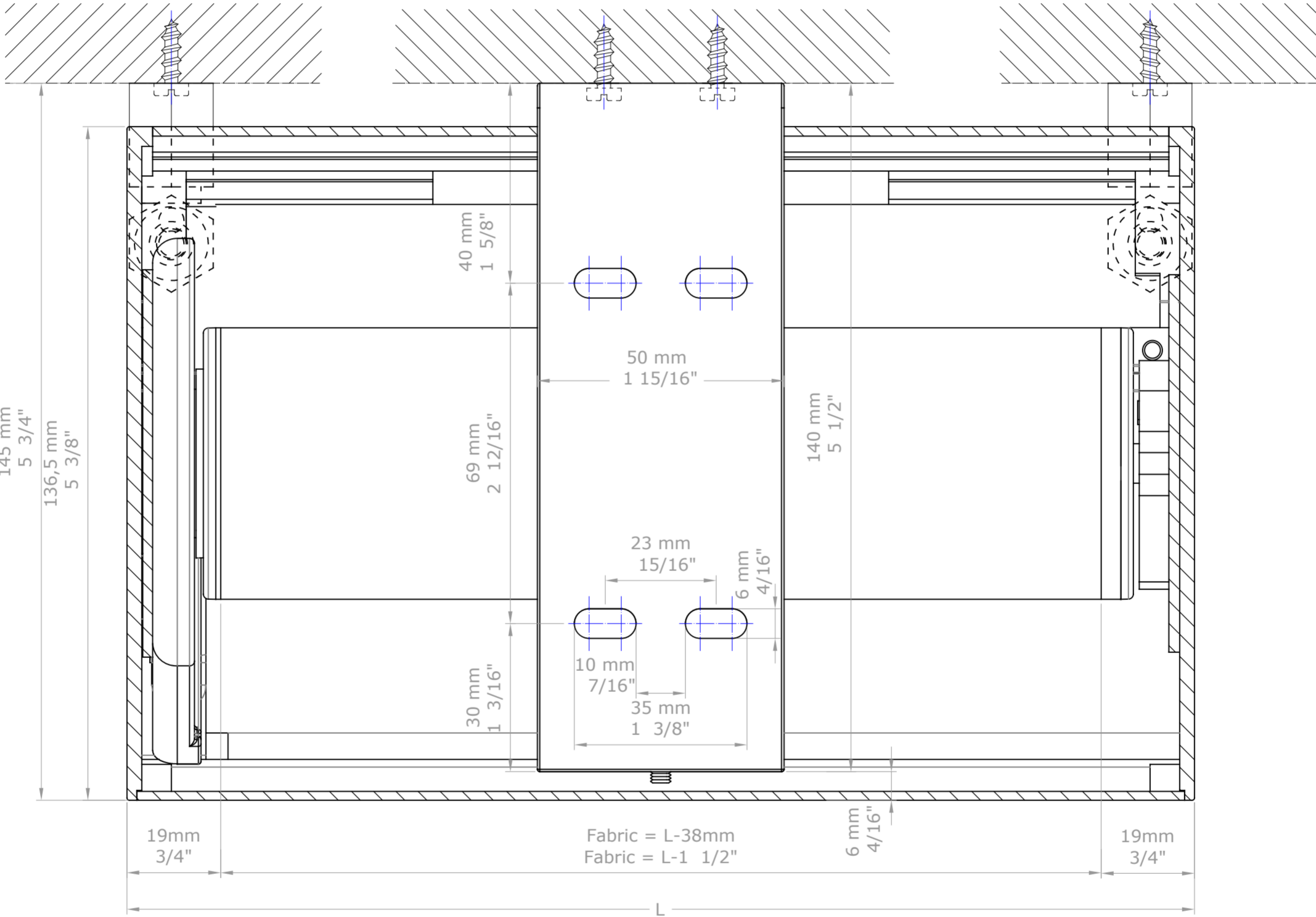
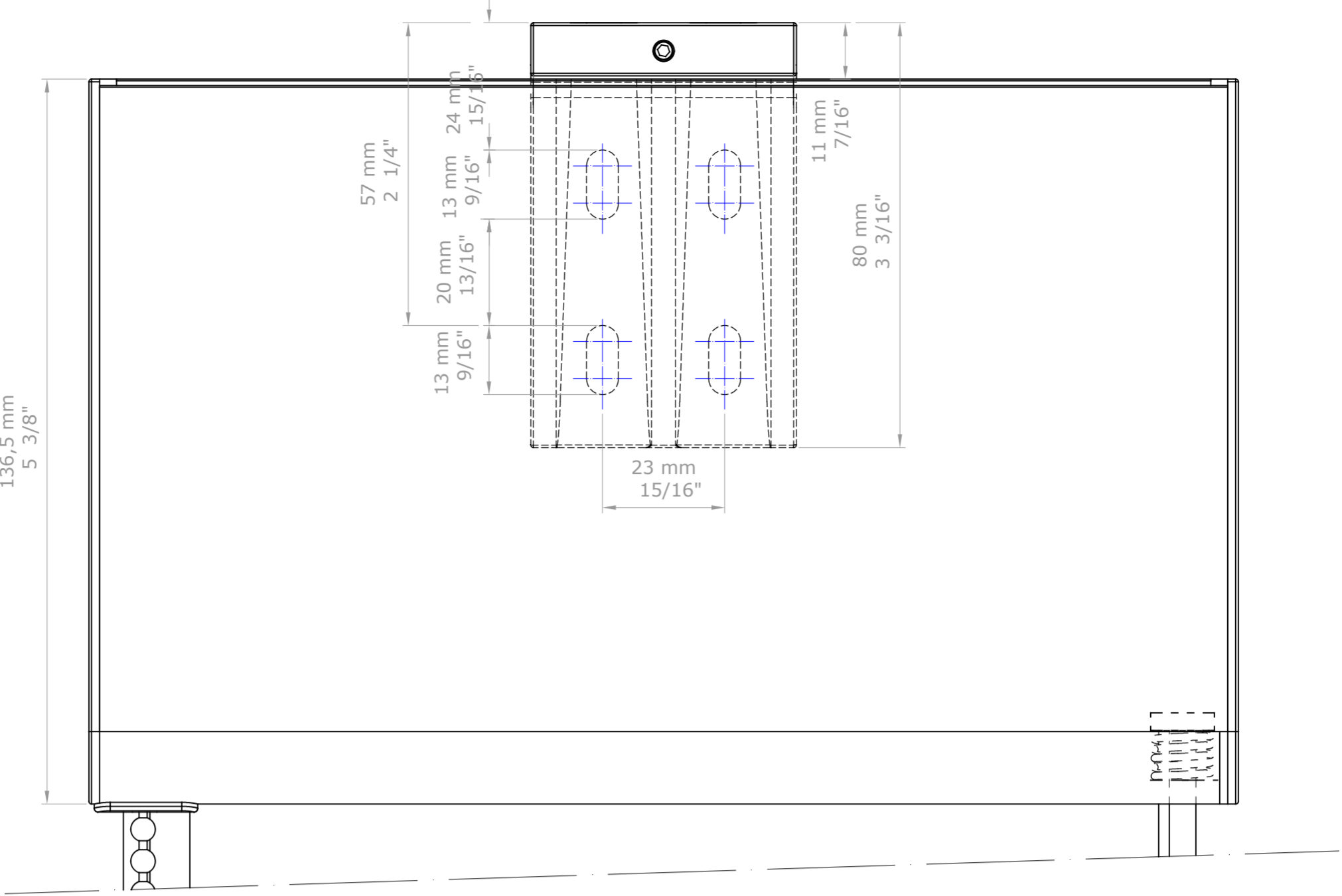
D. REVIS.		BANDALUX	
REVISION	123456789		
DATE	16-05-2017	PLANE Nº	
DESIGN	Antonio F.	FORMAT	A-3
SCALE	Rolling blind in Box B-Box 5". Chain. Cable Ø1/4" (Ø5 mm) guided Installation: wall / floor Mechanism: VTX30 Bottom rail: round hembar 1 1/8" (Ø30mm) Tube 2 9/16" (Ø65mm)		
1/1			



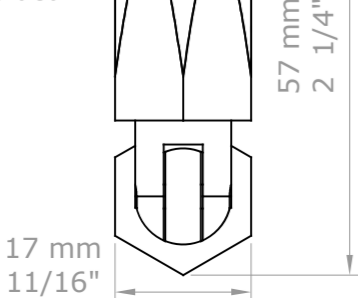
D. REVIS.		BANDALUX	
REVISION	123456789		
DATE	16-05-2017	PLANE N°	
DESIGN	Antonio F.	FORMAT	A-2
SCALE	Rolling blind in Box B-Box 5". Chain. Cable Ø1/4" (Ø5 mm) guided		
1/1	Installation: wall / floor		
	Mechanism: VTX30		
	Bottom rail: round hembar 1 1/8" (Ø30mm) Tube 2 9/16" (Ø65mm)		



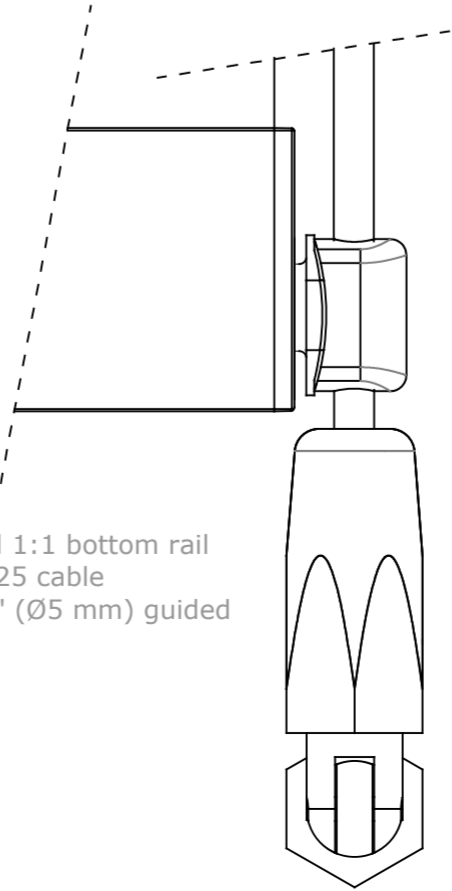
D. REVIS.		BANDALUX	
REVISION	123456789		
DATE	16-05-2017	PLANE Nº	
DESIGN	Antonio F.	FORMAT	A-3
SCALE	Rolling blind in Box B-Box 5". Chain. Cable Ø1/4" (Ø5 mm) guided Installation: wall / wall Mechanism: VTX30 Bottom rail: round hembar 1 1/8" (Ø30mm) Tube 2 9/16" (Ø65mm)		
1/1			



Detail 1:1 bottom rail  
round hembar 1 1/8" (Ø30mm)  
cable Ø1/4" (Ø5 mm) guided



Detail 1:1 bottom rail  
Slim 25 cable  
Ø1/4" (Ø5 mm) guided



D. REVIS.		BANDALUX	
REVISION	123456789		
DATE	16-05-2017	PLANE N°	
DESIGN	Antonio F.	FORMAT	A-2
SCALE	Rolling blind in Box B-Box 5". Chain. Cable Ø1/4" (Ø5 mm) guided Installation: wall / wall Mechanism: VTX30 Bottom rail: round hembar 1 1/8" (Ø30mm) Tube 2 9/16" (Ø65mm)		
1/1			